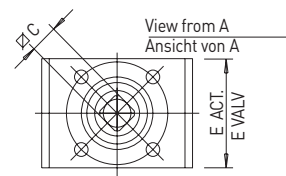
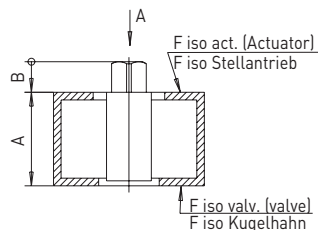
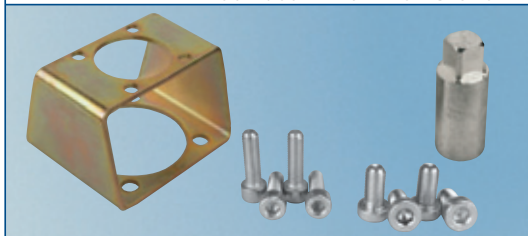


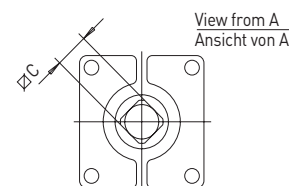
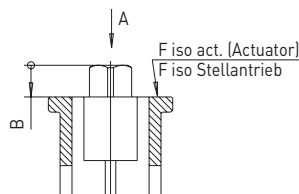
### ΒΑΣΕΙΣ ΣΤΕΡΕΩΣΗΣ ΕΝΕΡΓΟΠΟΙΗΤΩΝ

Connecting kit actuator-valve, series SUN WP, MOON, SELENE, TITAN-ARGOS, GEMINI  
Anschlusskit Ventil an Stellantrieb Baureihe SUN WP, MOON, SELENE, TITAN-ARGOS, GEMINI



KIT	MOD.	EACT.	EVALV.	A	B	∠C	R.Q. STD.	F iso valv.	F iso act.	KIT	MOD.	EACT.	EVALV.	A	B	∠C	R.Q. STD.	F iso valv.	F iso act.
K1GA0003	SUN WP	34	34	40	11	11	-	F03	F03	K1GA0014	SELENE	120	120	80	26	27	-	F12	F12
K1GA0009	SUN WP	46	46	50	16	17	-	F05	F05	K1GA0015	SELENE	140	140	80	36	36	-	F12	F14
K1GA0105	SUN WP	34	34	40	11	11	-	F03	F03	K1GA0113	SELENE	140	140	80	26	27	27-36	F10	F14
K1GA0109	SUN WP	65	46	50	16	17	17-22	F05	F07	K1GA0114	SELENE	200	200	100	46	46	-	F12	F16
K1GA0204	SUN WP	34	34	40	11	11	11-14	F03	F03	K1GA0115	SELENE	200	200	100	46	46	-	F12	F16
K1GA0205	SUN WP	34	34	40	11	11	11-14	F03	F03	K1GA0002	TITAN-ARG.	34	34	40	11	11	-	F03	F03
K1GA0206	SUN WP	34	34	40	15	14	-	F03	F03	K1GA0102	TITAN-ARG.	46	34	40	11	11	11-14	F03	F05
K1GA0207	SUN WP	46	40	50	15	14	-	F04	F05	K1GA0304	TITAN-ARG.	34	34	40	15	14	-	F03	F03
K1GA0208	SUN WP	46	40	50	16	17	-	F04	F05	K1GA0305	TITAN-ARG.	34	34	40	15	14	-	F03	F03
K1GA0306	SUN WP	46	34	40	15	14	-	F03	F05	K1GA0308	TITAN-ARG.	46	46	50	16	17	-	F05	F05
K1GA0307	SUN WP	46	40	50	15	14	14-17	F04	F05	K1GA0404	TITAN-ARG.	46	34	40	15	14	14-17	F03	F05
K1GA0004	MOON	34	34	40	11	11	-	F03	F03	K1GA0405	TITAN-ARG.	46	34	40	15	14	14-17	F03	F05
K1GA0005	MOON	46	34	40	11	11	11-14	F03	F05	K1GA0406	TITAN-ARG.	46	40	50	15	14	-	F04	F05
K1GA0006	MOON	46	40	50	15	14	-	F04	F03	K1GA0407	TITAN-ARG.	46	40	50	15	14	-	F04	F05
K1GA0007	MOON	46	40	50	15	14	-	F04	F05	K1GA0408	TITAN-ARG.	65	46	50	16	17	17-22	F05	F07
K1GA0008	MOON	46	46	50	16	17	-	F05	F05	K1GA0506	TITAN-ARG.	46	40	50	15	14	14-17	F04	F05
K1GA0010	MOON	70	70	60	16	17	-	F07	F07	K1GA0507	TITAN-ARG.	46	40	50	15	14	14-17	F04	F05
K1GA0011	MOON	70	70	60	21.5	22	-	F07	F07	K1GB0002	GEMINI	46	40	50	11	11	-	F04	F03
K1GA0012	MOON	120	120	80	21.5	22	-	F10	F10	K1GB0005	GEMINI	46	46	50	11	14	-	F05	F05
K1GA0104	MOON	34	34	40	11	11	11-14	F03	F03	K1GB0006	GEMINI	46	46	50	15	14	-	F05	F05
K1GA0106	MOON	46	40	50	15	14	14-17	F04	F05	K1GB0007	GEMINI	46	46	50	11	17	-	F05	F05
K1GA0107	MOON	46	40	50	15	14	14-17	F04	F05	K1GB0008	GEMINI	70	70	60	11	17	-	F07	F07
K1GA0108	MOON	65	46	50	16	17	-	F05	F07	K1GB0009	GEMINI	70	70	60	11	17	-	F07	F07
K1GA0110	MOON	70	70	60	16	17	17-22	F07	F07	K1GB0102	GEMINI	46	40	50	11	11	11-14	F04	F03
K1GA0111	MOON	90	90	60	21.5	22	22-27	F07	F10	K1GB0105	GEMINI	46	46	50	11	14	-	F05	F05
K1GA0112	MOON	120	120	80	21.5	22	22-27	F10	F10	K1GB0106	GEMINI	46	46	50	11	14	14-17	F05	F05
K1GA0604	MOON	33,5	33,5	40	11	11	11-14	F03	F03	K1GB0107	GEMINI	46	46	50	11	17	-	F05	F05
K1GA1006	MOON	46	40	50	11	11	-	F04	F03	K1GB0108	GEMINI	70	70	60	11	17	17/22	F07	F07
K1GA0013	SELENE	120	120	80	26	27	-	F10	F12	K1GB0109	GEMINI	70	70	60	11	17	17/22	F07	F07

Connecting kit actuator-valve, series TOTAL (TRIFLUX, DELTA, OLYMPIC), OLYMPIC HIPRESS  
Anschlusskit Ventil an Stellantrieb Baureihe TOTAL (TRIFLUX, DELTA, OLYMPIC), OLYMPIC HIPRESS



KIT	MOD.	B	∠C	R.Q. STD.	F iso actuator	KIT	MOD.	B	∠C	R.Q. STD.	F iso actuator
KABB0003	TOTAL	11	11	-	F03	KABB0107	TOTAL	15	14	14-17	F05
KABB0005	TOTAL	11	11	-	F03	KABB0108	TOTAL	15	14	14-17	F05
KABB0006	TOTAL	15	14	-	F05	KABB0109	TOTAL	16	17	17-22	F07
KABB0007	TOTAL	15	14	-	F05	KABB0110	TOTAL	16	17	17-22	F07
KABB0008	TOTAL	15	14	-	F05	KABB0203	TOTAL	15	14	-	F03
KABB0009	TOTAL	16	17	17-22	F07	KABB0012	OLYMPIC	21.5	22	22-27	F10
KABB0010	TOTAL	16	17	-	F07	K1BA0003	HIPRESS	11	11	-	F03
KABB0011	TOTAL	21.5	22	-	F07	K1BA0005	HIPRESS	15	14	-	F05
KABB0105	TOTAL	15	14	-	F05	K1BA0103	HIPRESS	15	14	-	F05
KABB0106	TOTAL	16	17	-	F05	K1BA0105	HIPRESS	16	17	-	F05