

# STRAIGHT PATTERN STOP VALVES PN 40 with handwheel flanged and with buttweld ends DN15 – DN250

2002xxA 1/2

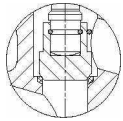
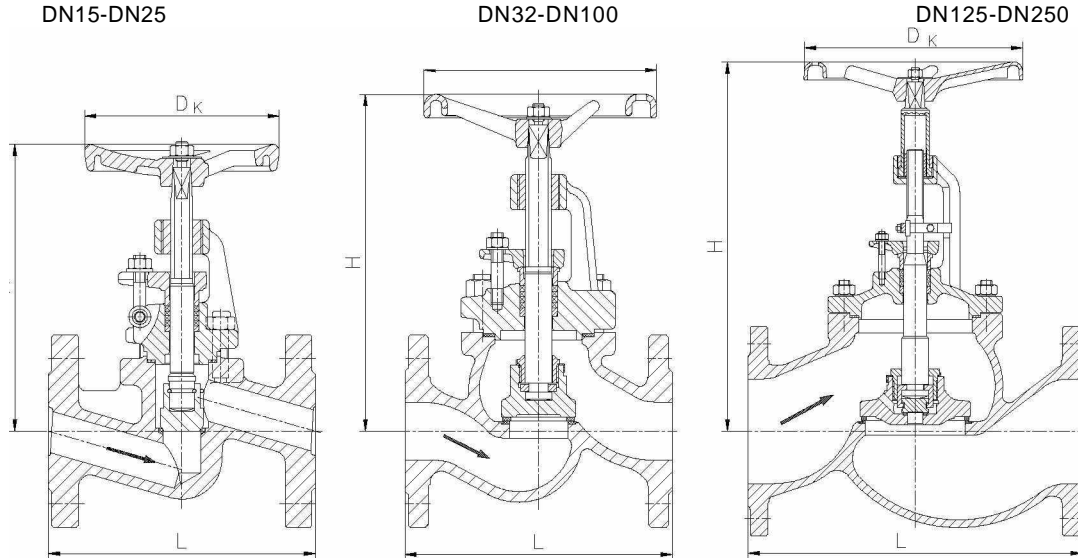
The valves are designed for application in pipeline installations conducting non-aggressive and non-toxic media. They are manufactured in following versions:

- for general application : type **ZPZ1, ZPR1**
- for petroleum products : type **ZFZ1**
- for naval application : type **ZMZ1**

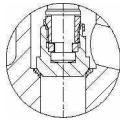
ΑΤΜΟΦΡΑΚΤΕΣ (ΕΠΙΣΤΟΜΙΑ) PN40



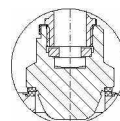
CHRYSSAFIDIS



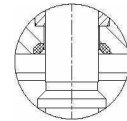
Disc fixed with wire  
(standard version  
for DN15-DN25)



Disc fixed with screw  
plug (special version  
for DN15-DN25)



Stop valve with control  
disc, type ZPR1,  
DN15-DN100



Back seat, valves for  
petroleum products,  
type ZFZ1

Maximum permissible operating temperature, TS [°C]							
20	100	150	20 10	250	300	350	400
Maximum permissible operating pressure, PS [bar]							
40	35	32	28,5	26	23,4	22	21,2

## Materials

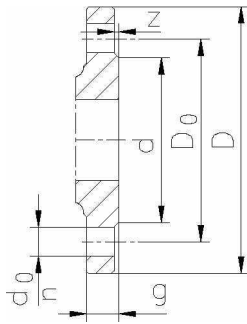
Body:	DN 15 ÷ 25	carbon steel
	DN 32 ÷ 250	carbon cast steel
Bonnet:	DN 15 ÷ 65 and 250	carbon steel
	DN 80 ÷ 200	carbon cast steel
Trim:	stainless steel (min.18%Cr)	
Packing:	reinforced graphite	

## Dimensions and weights

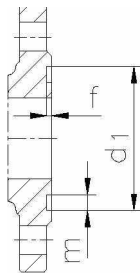
DN	15	20	25	32	40	50	65	80	100	125	150	200	250
L	130	150	160	480	200	230	290	310	350	400	480	600	730
H	186	186	186	250	265	280	305	325	360	450	515	640	635
stroke	14	14	14	14	23	23	39	35	45	36	55	66	85
D <sub>K</sub>	120	120	120	160	160	240	240	240	320	320	320	400	450
Weight /kg/	4,0 2,9*	4,3 3,4*	4,9 3,9*	11,3 8,7*	13 10*	17,7 14,2*	25,8 19,8*	35 26,5*	52 43,5*	67 57*	86 73*	151 131*	355 305*

(\* ) - relates to valves with buttweld ends

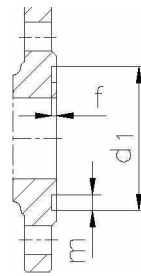
## End connections



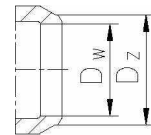
Flange with raised face



Flange with female face



Flange with groove



Buttweld end

## Dimensions of end connections

DN	15	20	25	32	40	50	65	80	100	125	150	200	250
<b>D</b>	95	105	185	140	140	165	185	200	235	270	300	375	450
<b>Do</b>	65	75	85	100	110	125	145	160	190	220	250	320	385
<b>do</b>	14	14	14	18	18	18	18	18	22	26	26	30	33
<b>n</b>							8	8	8	8	8	12	12
<b>g</b>	16	18	18	18	18	20	22	24	24	26	28	34	38
<b>d</b>	45	58	68	78	88	102	122	138	162	188	218	285	345
<b>z</b>	2	2	2	2	3	3	3	3	3	3	3	3	3
<b>d1</b>	45	58	68	78	88	102	122	138	162	188	218	285	313
<b>f</b>	4	4	4	4	4	4	4	4	5	5	5	5	5
<b>m</b>	6	8	8	8	8	8	8	8	11	11	11	11	11
<b>Dw</b>	15	20	24	31	37,5	49	66	79	98	122	147	203	277
<b>Dz</b>	21	26	31	39	46	59	78	92	162	136	162	221	259

Flanges PN 40 acc. to PN-EN 1092-1:

- raised face - type B1
- female face - type F
- groove - type D

## Additional information

Product meets requirements of Directive 97/23/WE/PED/.

Acceptance tests: PN-EN 12266-1, leak tightness – class A / valves **ZFZ1** /  
leak tightness – class B / other valves /

Face to face dimension: PN-EN 558-1, series 1  
Valves can be manufactured with internal parts (stem, disc) made of titanium alloys.  
Special versions for client's request are available.

We reserve the right to change contents and form of this sheet without notice.

